

SCAN

DATE: 4-18-05SCANNED 4/18/2005
PART 1 BOX 149
8 SHEETS O.M.

RECORD DRAWING SUBMITTAL

JOB NUMBER ES 2002-15 PROJECT NAME: Southslope Pipe Rehab
Phase II Area 44-5ATLAS PAGE NO.: 3, 14, 15, 33 LOCATION: Various LocationsPROJECT ENGINEER: B & M

PROJECT CONTRACTOR: _____

DATE RELEASED FROM INSPECTION: 3-1-05

CONSTRUCTION COST: \$ _____

CITY COST: \$ _____

LIFT STATION INFORMATION		PIPE SIZE	PIPE TYPE	PIPE LENGTH
NAME OF STATION: _____		<u>8"</u>	<u>slipline</u>	<u>26,290'</u>
USE FEES: \$ _____		<u>8"</u>	<u>CIPP</u>	<u>2502'</u>
RELIEF FEES: \$ _____		<u>24"</u>	<u>CIPP</u>	<u>1134'</u>
ACRES SERVED: _____		_____	_____	_____
FORCE MAIN: TYPE PIPE _____		_____	_____	_____
SIZE PIPE _____		_____	_____	_____
LENGTH _____		_____	_____	_____
		<u>TOTAL</u>		<u>29,926'</u>
COMMENTS: _____		ABANDONED LINE		
_____		_____		
_____		_____		

DATE SENT TO GRAPHICS: 5-1-05

DATE POSTED TO ATLAS: _____

CHECKED BY: _____

CONSTRUCTION PLANS FOR
SOUTHSIDE PLANT INFLUENT STUDY PHASE II
CONTRACT NO. 1, PIPELINE REHABILITATION

PROJECT NO. ES 2002-15
OWRB LOAN NUMBER ORF-02-0002-CW

ACCOUNT NO. 6037-5455605-040522960108 AND 6311-5455603-040522960108

PUBLIC WORKS DEPARTMENT
CITY OF TULSA, OKLAHOMA

INDEX TO DRAWINGS

SHEET NO.	DESCRIPTION
1	TITLE SHEET
2	NOTES, VICINITY MAP, SUMMARY OF QUANTITIES
3	BASE SHEET (ATLAS PAGE 3)
4	BASE SHEET (ATLAS PAGE 14)
5	BASE SHEET (ATLAS PAGE 15)
6	BASE SHEET (ATLAS PAGE 33)
7	POINT REPAIR AND MANHOLE REHABILITATION SCHEDULES
8	PIPE LINING SCHEDULE

PLANS PREPARED BY



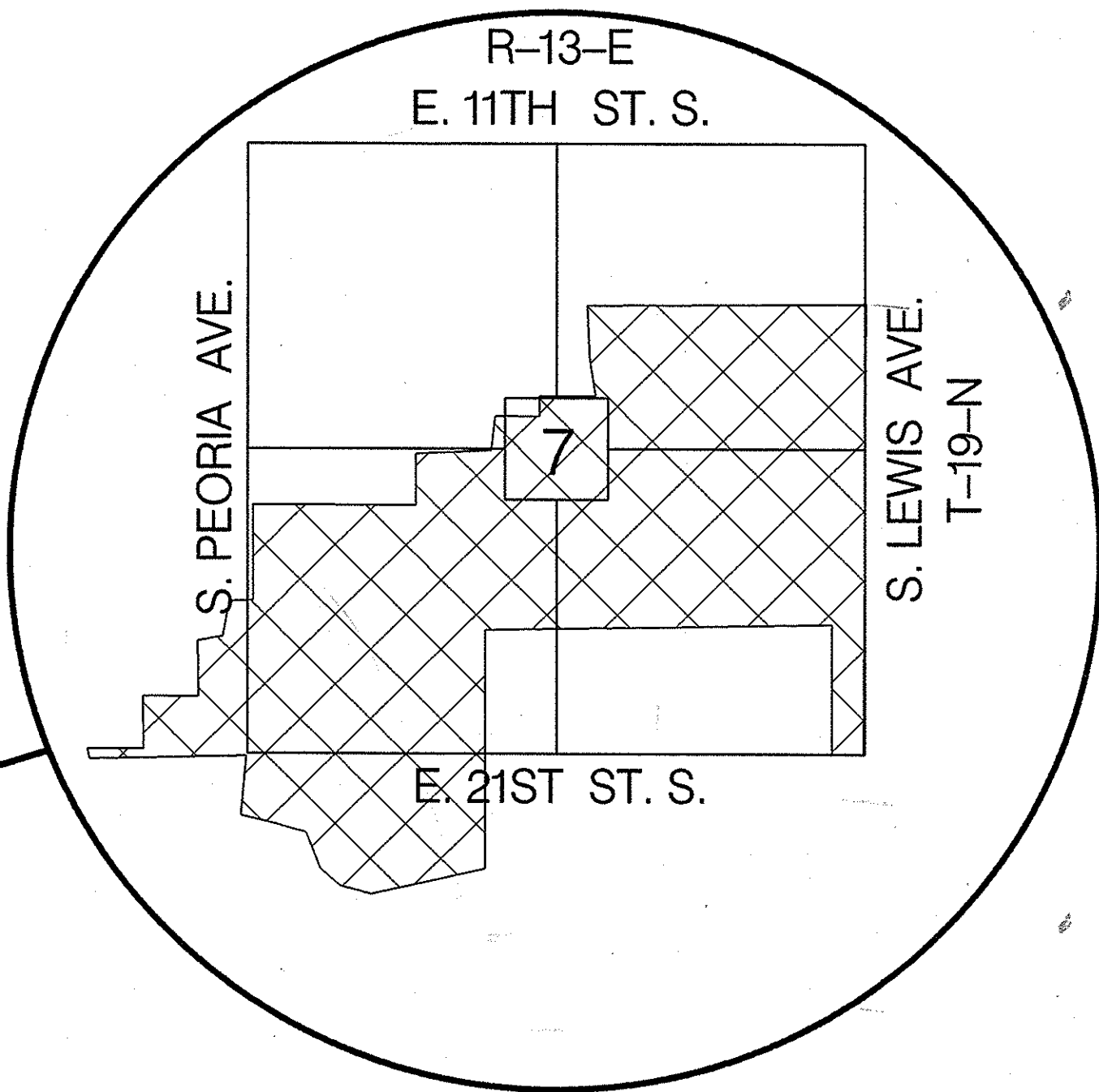
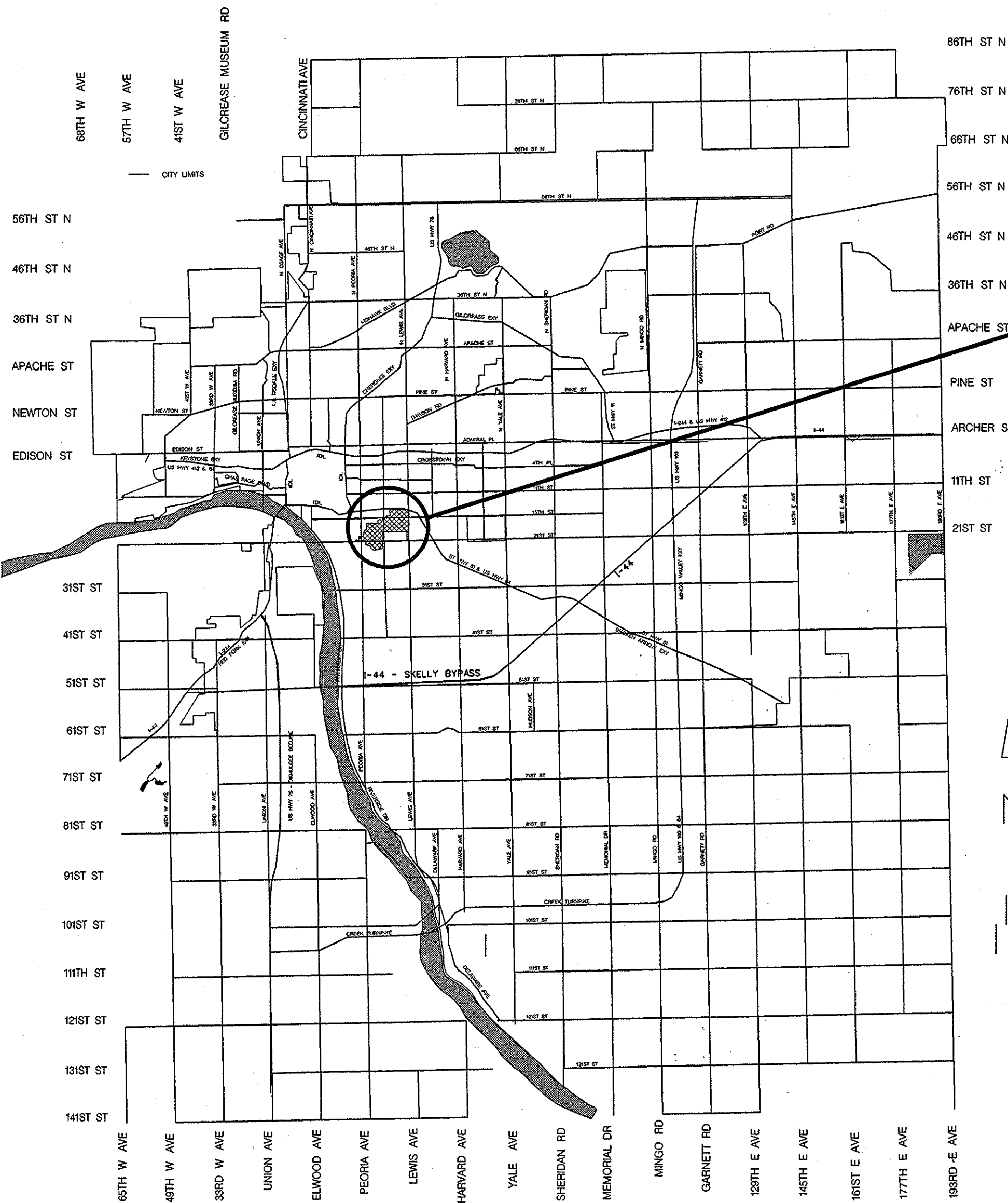
9400 WARD PARKWAY
KANSAS CITY, MO 64114
816-333-9400

MAINTENANCE BASIN 44-S
SUB-BASINS 35 AND 36



UTILITY COORDINATION BOX

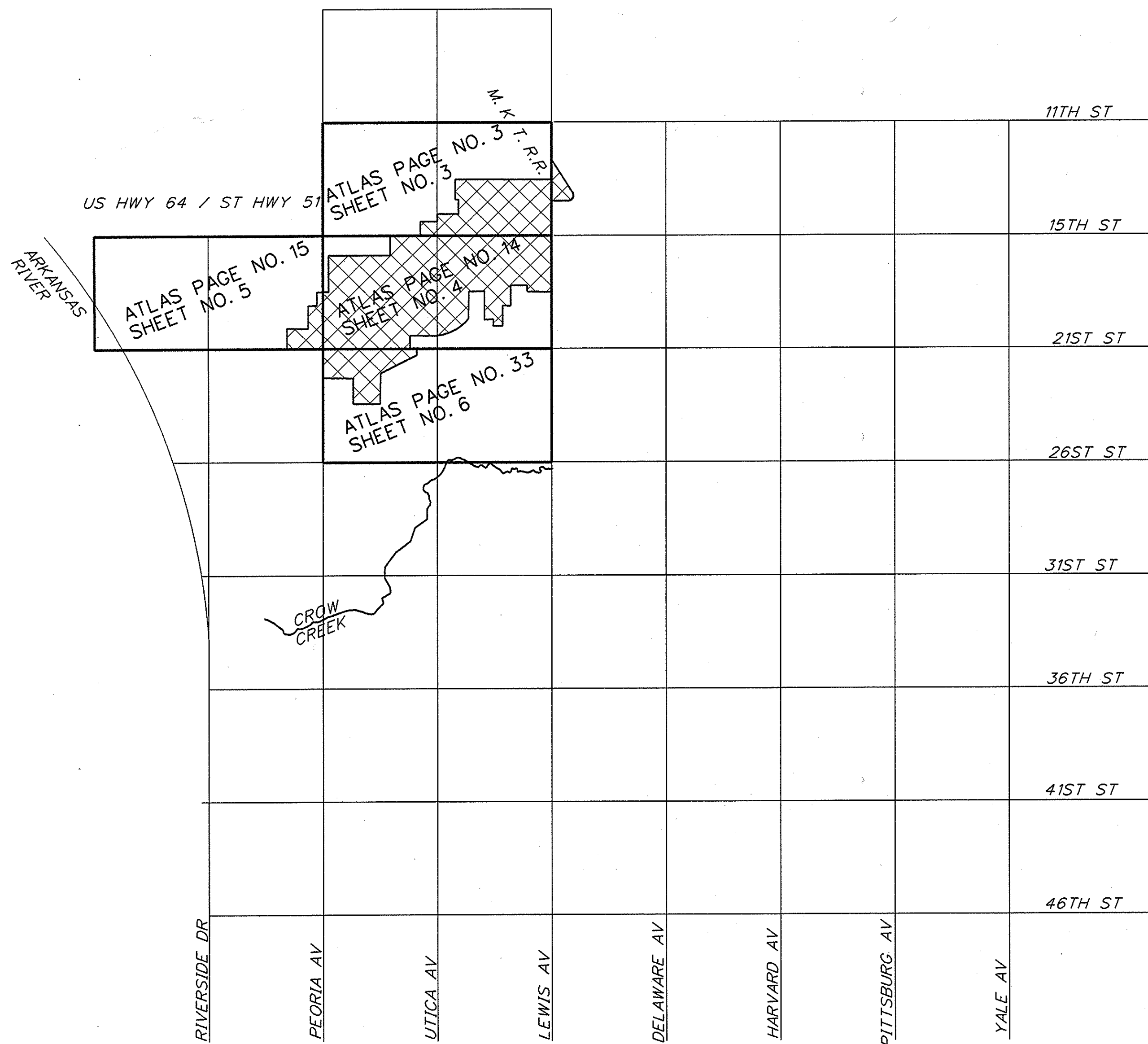
	NUMBER
PUBLIC WORKS	
WATER DESIGN	596-9577
WASTEWATER DESIGN	596-7832
TRANSPORTATION DESIGN	596-9636
TRAFFIC ENGINEERING DESIGN	596-9741
STORMWATER DESIGN	596-7836
OKLAHOMA GAS & ELECTRIC	
OKLAHOMA NATURAL GAS CO.	831-8261
THERMAL SYSTEM, INC. (TRIGEN)	
COX COMMUNICATIONS	669-4866
PUBLIC SERVICE CO.	599-2757
GENERAL TELEPHONE	451-3441
SOUTHWESTERN BELL TELEPHONE	596-6702
AT&T	
SPRINT	



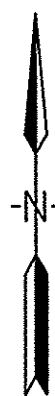
APPROVED BY

CHARLES L. HARDT
PUBLIC WORKS DIRECTOR

MARCH 28, 2003
DATE



VICINITY MAP



SUMMARY OF QUANTITIES

ITEM	SPECIFICATION SECTION	ITEM DESCRIPTION	UNIT	QUANTITY
1	D2-8, D2-9	Preconstruction Videotaping	LF	32,556
2	D2-8, D2-9	Sliplining or CIPP, 8" I. D. Pipe	LF	25,034
3	D2-8, D2-9	Sliplining or CIPP, 10" I. D. Pipe	LF	2,785
4	D2-8, D2-9	Sliplining or CIPP, 24" I. D. Pipe	LF	471
5	D2-8, D2-9	Service Connections	EA	753
6	D2-9	CIPP, 8" I. D. Pipe	LF	3,605
7	D2-9	CIPP, 24" I. D. Pipe	EA	661
8	D2-12, D2-24	Point Repair, 8" I. D. Pipe	EA	7
9	D2-12, D2-24	Point Repair, Storm Sewer, 15" I. D. Pipe	EA	1
10	D2-12, D2-24	Additional Length for Point Repair, 8" I. D. Pipe	LF	80
11	D2-12, D2-24	Additional Length for Point Repair, Storm Sewer, 15" I. D. Pipe	LF	10
12	D2-18	Manhole Frame and Cover Replacement, (Type A), 48"	EA	2
13	D2-20	Manhole Step Removal and Replacement, (Type D), 48"	EA	3
14	D2-21	Interior Manhole Rehabilitation, 48" I. D.	VF	43
15	D2-23	Obstruction Removal	EA	5
16	641	Mobilization	LS	1

PIPELINE REHABILITATION GENERAL NOTES

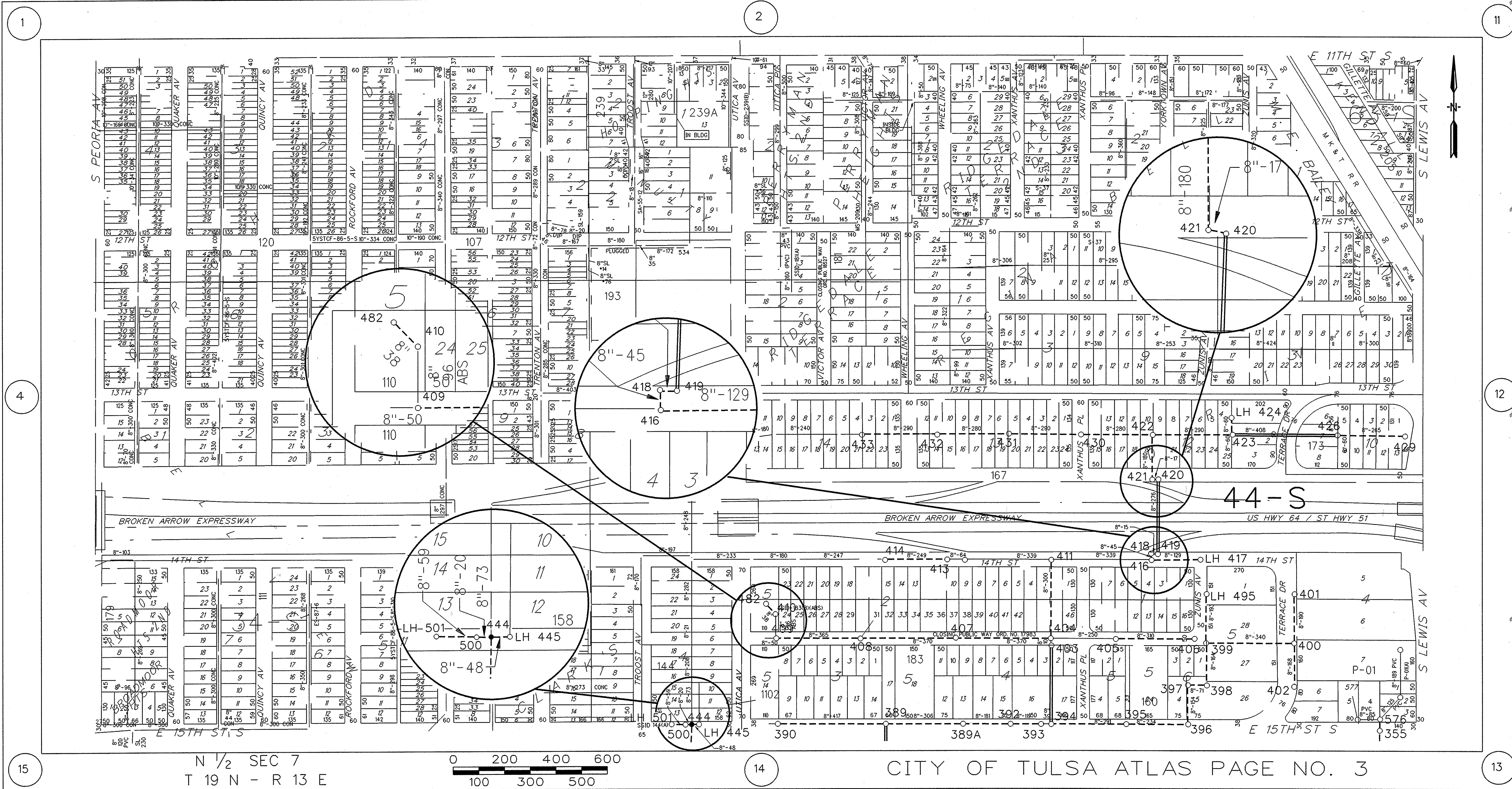
- ALL MANHOLES, PIPE SIZES OBSERVATIONS, DEFECTS, UTILITIES (ABOVE AND BELOW GROUND) AND THEIR LOCATIONS ARE SHOWN ACCORDING TO THE BEST INFORMATION AVAILABLE TO THE ENGINEER. THE CONTRACTOR IS RESPONSIBLE TO FIELD VERIFY ALL INFORMATION BEFORE ANY CONSTRUCTION MATERIALS ARE ORDERED. UTILITIES DAMAGED THROUGH THE NEGLIGENCE OF THE CONTRACTOR TO OBTAIN THE LOCATION OF SAME SHALL BE REPAIRED OR REPLACED BY THE CONTRACTOR AT HIS EXPENSE.
- PRIOR TO PIPELINE CONSTRUCTION, CONTRACTOR SHALL REMOVE ALL DEBRIS AND BLOCKAGES IN ORDER TO CLEAN AND RE-TELEVISION, IN COLOR, ALL LINES DESIGNATED FOR REHABILITATION. RE-TELEVISION LINES IS CONSIDERED SUBSIDIARY TO PIPELINE REHABILITATION AND WILL NOT BE PAID FOR DIRECTLY.
- IF CURED-IN-PLACE PIPE LINING OR SLIPLINING IS USED, THE CONTRACTOR SHALL REMOVE THAT PORTION OF PROTRUDING TAPS EXTENDING INTO THE PIPE BY SAW CUTTING. BREAKING OF THE PROTRUDING TAP WILL NOT BE ALLOWED.
- EMBEDMENT FOR ALL PIPES WILL BE AS SHOWN IN THE STANDARD DETAILS EXCEPT WHERE NOTED OTHERWISE ON DRAWINGS.
- THE CONTRACTOR SHALL HAVE, AT A MINIMUM, ONE (1) EXECUTED COPY OF THE CONTRACT DOCUMENTS AT THE JOB SITE AT ALL TIMES.
- DRIVEWAYS, SIDEWALKS, FENCES, SHRUBS, ORNAMENTAL AND FRUIT TREES AND OTHER AREAS DISTURBED BY THE CONTRACTOR SHALL BE RESTORED TO A CONDITION EQUAL TO OR BETTER THAN THAT EXISTING BEFORE DAMAGE OCCURRED.
- SAW-CUTS REQUIRED FOR REMOVAL AND REPLACEMENT ITEMS SHALL BE FULL DEPTH OF THE EXISTING SURFACE MATERIAL. SAW-CUTS SHALL NOT BE PAID FOR DIRECTLY, BUT SHALL BE CONSIDERED SUBSIDIARY TO THE VARIOUS REMOVAL AND REPLACEMENT ITEMS REQUIRED.
- ALL UNSUITABLE MATERIALS REMOVED DURING TRENCHING AND EXCAVATION SHALL BE DISPOSED OF AT A SITE APPROVED BY THE OWNER. STOCKPILING OF EXCAVATED MATERIAL IN STREET OR ALLEY RIGHTS-OF-WAY MAY BE ALLOWED UPON APPROVAL BY THE OWNER.
- ALL VITRIFIED CLAY PIPE USED FOR CONSTRUCTION SHALL BE EXTRA STRENGTH.
- SIDEWALKS, CURBS AND PAVEMENTS SHALL BE FINISHED TO MATCH EXISTING SURROUNDING SURFACES.
- ALL CONSTRUCTION TO BE IN STRICT ACCORDANCE WITH CURRENT CITY OF TULSA, PUBLIC WORKS STANDARDS AND SPECIFICATIONS.
- THE CONTRACTOR SHALL WORK IN COOPERATION WITH THE CITY OF TULSA TO ESTABLISH, INSTALL, MAINTAIN, AND OPERATE ADEQUATE AND SAFE TRAFFIC CONTROLS DURING THE ENTIRE CONSTRUCTION PROJECT. IF ROAD CLOSURE IS NECESSARY, THE CONTRACTOR SHALL PREPARE AND SUBMIT A TRAFFIC CONTROL PLAN TO MARK BROWN 596-9741 AT LEAST 48 HOURS PRIOR TO COMMENCING WORK. CONTRACTOR SHALL PLACE THE TRAFFIC CONTROL FLAGMEN, BARRICADES, AND OTHER DEVICES WITHIN THE VICINITY OF THE CONSTRUCTION AS REQUIRED.



Contract No. 1
PIPELINE REHABILITATION & REPLACEMENT
TULSA SOUTHSIDE PLANT INFLUENT
SANITARY SEWER IMPROVEMENTS PHASE II
CITY OF TULSA, OKLAHOMA
PUBLIC WORKS DEPARTMENT
ENGINEERING SERVICES DIVISION

PLANS AND ESTIMATES PREPARED BY: Burns & McDonnell

REVISION		BY	DATE	PLAN SCALE:	DRAWN	JRH	12/17/02	APPROVED:
----------	--	----	------	-------------	-------	-----	----------	---



LEGEND

44-S

○ EXISTING MANHOLE - NO REPAIR

● MANHOLE, REHABILITATE OR REPLACE - SEE SCHEDULE

▲ MANHOLE NUMBER (LH = LAMPHOLE)

— DIRECTION OF FLOW

--- SEWER LINE, SLOPLINE

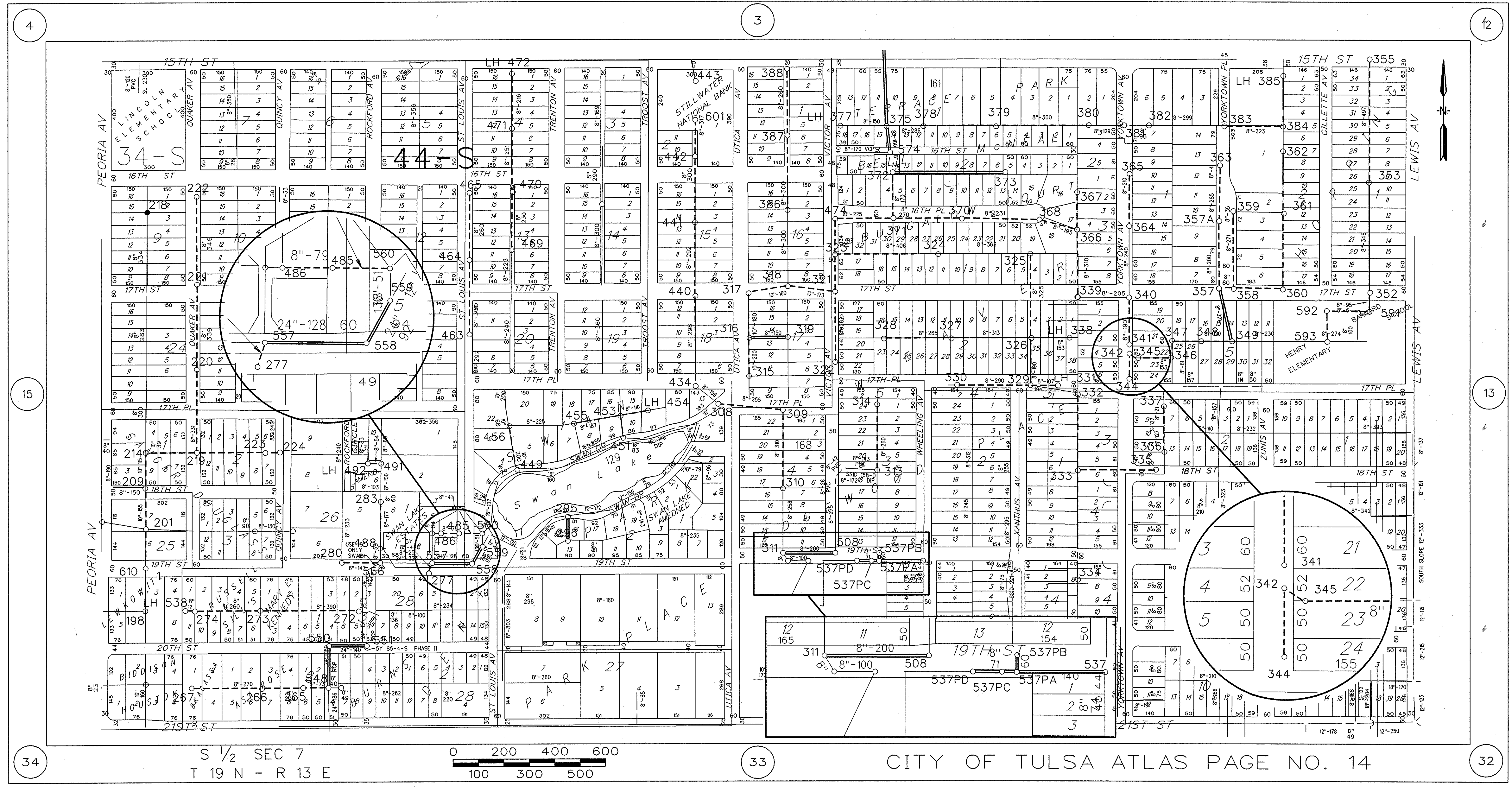
--- PIPE CRUSHED, 6" VCP TO 8" HDPE

--- SEWER LINE, CIPP



Contract No. 1		PIPELINE REHABILITATION & REPLACEMENT	
TULSA SOUTHSIDE PLANT INFLUENT		SANITARY SEWER IMPROVEMENTS PHASE II	
CITY OF TULSA, OKLAHOMA		PUBLIC WORKS DEPARTMENT	
ENGINEERING SERVICES DIVISION		PLANS AND ESTIMATES PREPARED BY:	
		Burns & McDonnell	
REVISION		BY	DATE
CONFORMING TO		DATE	DATE
CONSTRUCTION RECORDS		DBL 3-8-05	
PLAN SCALE:		DRAWN	JRH 12/17/02
1" = 200'		DESIGNED	JAM 12/17/02
PROFILE SCALE:		SURVEY	
HORIZONTAL:		FIELD MNGR.	
1" =		SECT. MNGR.	
VERTICAL		PROJ. MNGR.	
1" =		RECOMMENDED:	
FILE:		DEPUTY DIRECTOR	
DRAWING:		PUBLIC WORKS DIRECTOR	
ATLAS PAGE NO: 3		DATE	MARCH 28, 2003
		SHEET	3 OF 8 SHEETS

J:\TULSA\30585 TulsaSEPHASEII\TSS503.DGN



LEGEND

44-S MAINTENANCE AREA

○ EXISTING MANHOLE - NO REPAIR

● MANHOLE, REHABILITATE OR REPLACE - SEE SCHEDULE

432 MANHOLE NUMBER (LH = LAMPHOLE)

▲ DIRECTION OF FLOW

----- SEWER LINE, SLIPLINE

----- PIPE CRUSHED, 6" VCP TO 8" HDPE

===== SEWER LINE, CIPP



J:\TULSA\30585\TulsaSESPHaseII\TSS04.dgn



LEGEND

44-S MAINTENANCE AREA

○ EXISTING MANHOLE - NO REPAIR

● MANHOLE, REHABILITATE OR REPLACE - SEE SCHEDULE

432 MANHOLE NUMBER (LH = LAMPHOLE)

▲ DIRECTION OF FLOW

----- SEWER LINE, SLIPLINE

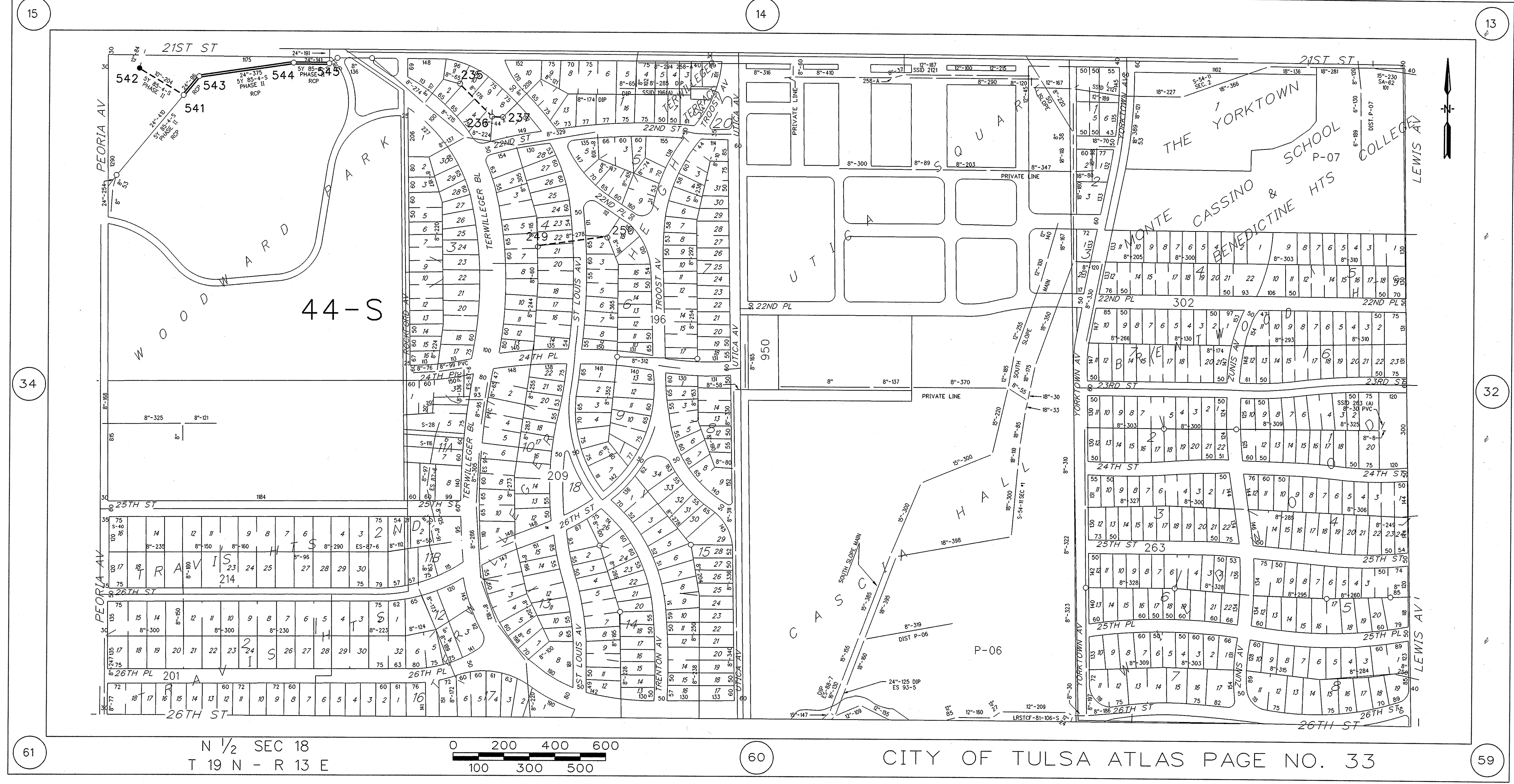
----- PIPE CRUSHED, 6" VCP TO 8" HDPE

===== SEWER LINE, CIPP



Contract No. 1 PIPELINE REHABILITATION & REPLACEMENT			
TULSA SOUTHSIDE PLANT INFLUENT SANITARY SEWER IMPROVEMENTS PHASE II			
CITY OF TULSA, OKLAHOMA PUBLIC WORKS DEPARTMENT ENGINEERING SERVICES DIVISION			
PLANS AND ESTIMATES PREPARED BY: Burns & McDonnell			
REVISION	BY	DATE	APPROVED:
CONFORMING TO			
CONSTRUCTION RECORDS	DBL	3-8-05	
PROFILE SCALE:	DRAWN	JRH	12/17/02
HORIZONTAL:	DESIGNED	JAM	12/17/02
VERTICAL:	SURVEY		
FILE:	FIELD MNGR.		
ATLAS PAGE NO: 15	SECT. MNGR.		
	PROJ. MNGR.		
	RECOMMENDED:		
	DEPUTY DIRECTOR		
	PUBLIC WORKS DIRECTOR		
	DATE	MARCH 28, 2003	
	SHEET	5 OF 8 SHEETS	

J:\TULSA\30585\TulsaSEPHASEII\SSS0305.DGN



44-S

LEGEND

- EXISTING MANHOLE - NO REPAIR
- MANHOLE, REHABILITATE OR REPLACE - SEE SCHEDULE
- 432 MANHOLE NUMBER (LH = LAMPHOLE)
- ▲ DIRECTION OF FLOW
- SEWER LINE, SLIPLINE
- PIPE CRUSHED, 6" VCP TO 8" HDPE
- ===== SEWER LINE, CIPP



Contract No. 1 PIPELINE REHABILITATION & REPLACEMENT			
TULSA SOUTHSIDE PLANT INFLUENT SANITARY SEWER IMPROVEMENTS PHASE II			
CITY OF TULSA, OKLAHOMA PUBLIC WORKS DEPARTMENT ENGINEERING SERVICES DIVISION			
PLANS AND ESTIMATES PREPARED BY: Burns & McDonnell			
REVISION	BY	DATE	APPROVED:
CONFORMING TO			
CONSTRUCTION RECORDS	DBL	3-8-05	
PLAN SCALE:	DRAWN	JRH 12/17/02	
	DESIGNED	JAM 12/17/02	
PROFILE SCALE:	SURVEY		
	FIELD MNGR.		
HORIZONTAL:	SECT. MNGR.		
	PROJ. MNGR.		
VERTICAL	RECOMMENDED:		
	DEPUTY DIRECTOR		
FILE:	DRAWING:		PUBLIC WORKS DIRECTOR
ATLAS PAGE NO: 33	DATE	MARCH 28, 2003	DATE
			SHEET 6 OF 8 SHEETS

J:\TULSA 30685\TulsaSESEPHASEII\TSS06.DGN

J:\TULSA\30585\TulsaSEPHASEII\TSS507PR.DGN

MANHOLE REHABILITATION SCHEDULE

FRAME AND COVER REPLACEMENT (D2-18), INTERIOR REHABILITATION (D2-21), OR MANHOLE STEP REMOVAL AND REPLACEMENT (D2-20)

SHEET No.	ATLAS SHEET	BASIN ID	MHID	MANHOLE ADDRESS			MH DIAMETER	MH DEPTH	SURFACE MATERIAL	MHMTWALL	TYPE A	TYPE F	TYPE I
3	3	44S	444	1643	E	15TH ST	48	13.48	C	B		13.5	1
4	14	44S	218	1620	S	QUAKER AV	48	14.16	C	B	1	14.2	1
6	33	44S	542	2100	S	PEORIA AV	48	15.28	S	B	1	15.3	1
TOTALS											2	43	3

MANHOLE REHABILITATION METHODS

TYPE A - MANHOLE FRAME AND COVER REPLACEMENT PER SPECIFICATION D2-18
TYPE F - INTERIOR MANHOLE REHABILITATION PER SPECIFICATION D2-21
TYPE I - MANHOLE STEP REMOVAL AND REPLACEMENT PER SPECIFICATION D2-20

Contract No. 1
PT REPAIR/MANHOLE REHAB SCHEDULES

TULSA SOUTHSIDE PLANT INFLUENT
SANITARY SEWER IMPROVEMENTS PHASE II

CITY OF TULSA, OKLAHOMA
PUBLIC WORKS DEPARTMENT
ENGINEERING SERVICES DIVISION

PLANS AND ESTIMATES PREPARED BY:

Burns
&
McDonnell

REVISION		BY	DATE	PLAN SCALE:	DRAWN	JRH	12/17/02	APPROVED:
CONFORMING TO				1" =	DESIGNED	JAM	12/17/02	
CONSTRUCTION RECORDS		DBL	3-8-05		SURVEY			
				PROFILE SCALE:	FIELD MNGR.			
				HORIZONTAL:	SECT. MNGR.			
				1" =	PROJ. MNGR.			
				VERTICAL	RECOMMENDED:			
				1" =	DEPUTY DIRECTOR			PUBLIC WORKS DIRECTOR
				FILE:	DRAWING:			DATE MARCH 28, 2003
				ATLAS PAGE NO:				SHEET 7 OF 8 SHEETS

J:\TULSA\30585 TulsaSEPHASE1\TSS508PL.DGN

Sheet Number	Atlas Sheet	BasinID	MHID	PIPE_ID	DSMHLlength	PipeSize	Service Connections	Remarks
3	3	44S	389	389-375	300	8	1	CIPP
3	3	44S	389A	389A-389	304	8	3	SLIPLINED
3	3	44S	390	390-389	414	8	8	SLIPLINED
3	3	44S	392	392-389A	177	8	2	SLIPLINED
3	3	44S	393	393-392	116	8	1	SLIPLINED
3	3	44S	395	395-394	288	8	4	SLIPLINED
3	3	44S	396	396-395	231	8	2	SLIPLINED
3	3	44S	397	397-396	151	8	1	SLIPLINED
3	3	44S	398	398-397	67	8	0	SLIPLINED
3	3	44S	399	399-398	158	8	2	SLIPLINED
3	3	44S	400	400-399	334	8	3	SLIPLINED
3	3	44S	401	401-400	161	8	3	SLIPLINED
3	3	44S	402	402-400	186	8	3	SLIPLINED
3	3	44S	403	403-394	314	8	3	CIPP
3	3	44S	406	406-405	305	10	10	SLIPLINED
3	3	44S	407	407-404	367	8	18	SLIPLINED
3	3	44S	408	408-407	366	8	15	SLIPLINED
3	3	44S	409	409-408	323	8	8	SLIPLINED
3	3	44S	411	411-404	301	8	4	SLIPLINED
3	3	44S	414	414-413	247	8	5	SLIPLINED
3	3	44S	417	LH417-416	123	8	3	SLIPLINED
3	3	44S	418	418-416	41	8	0	SLIPLINED
3	3	44S	419	419-418	11	8	0	SLIPLINED
3	3	44S	420	420-419	278	8	0	CIPP
3	3	44S	421	421-420	12	8	0	SLIPLINED
3	3	44S	422	422-421	178	8	2	SLIPLINED
3	3	44S	423	423-422	296	8	10	SLIPLINED
3	3	44S	424	LH424-423	73	8	4	SLIPLINED
3	3	44S	426	426-423	413	8	1	CIPP
3	3	44S	429	429-426	261	8	7	SLIPLINED
3	3	44S	430	430-422	277	8	10	SLIPLINED
3	3	44S	431	431-430	280	8	10	SLIPLINED
3	3	44S	432	432-431	278	8	13	SLIPLINED
3	3	44S	433	433-432	283	8	8	SLIPLINED
3	3	44S	444	444-443	100	8	1	SLIPLINED
3	3	44S	445	LH445-444	47	8	1	SLIPLINED
3	3	44S	482	482-410	35	8	1	SLIPLINED
3	3	44S	495	LH495-399	189	8	5	SLIPLINED
3	3	44S	500	500-444	15	8	0	SLIPLINED
3	3	44S	501	LH501-500	58	8	1	SLIPLINED
3	3	44S	576	576-355	25	8	2	SLIPLINED
4	14	44S	610	610-198	174	10	1	SLIPLINED
4	14	44S	201	201-610	187	10	4	SLIPLINED
4	14	44S	209	209-201	155	10	0	SLIPLINED
4	14	44S	214	214-209	136	10	1	SLIPLINED
4	14	44S	219	219-214	170	8	5	SLIPLINED
4	14	44S	220	220-219	330	8	2	SLIPLINED
4	14	44S	221	221-220	338	8	8	SLIPLINED
4	14	44S	222	222-221	346	8	8	SLIPLINED
4	14	44S	223	223-219	294	8	14	SLIPLINED
4	14	44S	224	224-223	65	8	0	SLIPLINED
4	14	44S	265	265-548	84	8	2	SLIPLINED
4	14	44S	266	266-265	199	8	9	SLIPLINED
4	14	44S	267	267-266	267	8	14	SLIPLINED
4	14	44S	273	273-272	388	8	15	SLIPLINED
4	14	44S	274	274-273	250	8	11	SLIPLINED
4	14	44S	277	277-557	31	8	0	SLIPLINED
4	14	44S	280	280-556	140	8	1	SLIPLINED
4	14	44S	283	283-488	205	8	1	SLIPLINED
4	14	44S	296	296-295	100	8	2	CIPP
4	14	44S	309	309-308	250	8	0	SLIPLINED
4	14	44S	310	310-309	305	8	0	SLIPLINED
4	14	44S	314	314-313	253	8	2	SLIPLINED
4	14	44S	316	316-315	206	10	1	SLIPLINED
4	14	44S	317	317-316	167	10	0	SLIPLINED
4	14	44S	318	318-317	146	10	0	SLIPLINED
4	14	44S	319	319-316	152	8	3	CIPP
4	14	44S	321	321-318	316	10	1	SLIPLINED
4	14	44S	322	322-321	289	8	0	SLIPLINED
4	14	44S	323	323-321	136	10	0	SLIPLINED
4	14	44S	324	324-323	403	8	6	SLIPLINED
4	14	44S	326	326-325	322	8	5	SLIPLINED
4	14	44S	327	327-326	309	8	12	SLIPLINED
4	14	44S	328	328-327	260	8	9	SLIPLINED
4	14	44S	329	329-326	187	8	2	SLIPLINED
4	14	44S	330	330-329	269	8	4	SLIPLINED
4	14	44S	331	LH331-329	105	8	1	SLIPLINED
4	14	44S	333	333-332	276	8	9	SLIPLINED
4	14	44S	334	334-333	330	8	9	SLIPLINED
4	14	44S	335	335-333	348	8	3	SLIPLINED
4	14	44S	337	337-336	123	8	4	SLIPLINED
4	14	44S	338	LH338-326	148	8	6	SLIPLINED

Sheet Number	Atlas Sheet	BasinID	MHID	PIPE_ID	DSMHLlength	PipeSize	Service Connections	Remarks
4	14	44S	339	339-366	234	8	5	SLIPLINED
4	14	44S	341	341-340	196	8	2	SLIPLINED
4	14	44S	344	344-342	77	8	3	SLIPLINED
4	14	44S	345	345-342	14	8	0	SLIPLINED
4	14	44S	346	346-345	146	8	2	SLIPLINED
4	14	44S	347	347-346	58	8	0	SLIPLINED
4	14	44S	348	348-347	99	8	5	SLIPLINED
4	14	44S	349	349-348	117	8	4	SLIPLINED
4	14	44S	352	352-591	90	8	0	SLIPLINED
4	14	44S	355	355-353	486	8	10	SLIPLINED
4	14	44S	357	357-349	224	8	0	CIPP
4	14	44S	357A	357A-357	196	8	3	SLIPLINED
4	14	44S	358	358-357	56	8	0	SLIPLINED
4	14	44S	359	359-358	266	8	3	SLIPLINED
4	14	44S	360	360-358	195	8	0	SLIPLINED
4	14	44S	361	361-360	297	8	7	SLIPLINED
4	14	44S	362	362-361	215	8	9	PIPE BURST
4	14	44S	363	363-357A	280	8	3	SLIPLINED
4	14	44S	365	365-364	201	8	5	SLIPLINED
4	14	44S	366	366-368	212	8	3	SLIPLINED
4	14	44S	367	367-366	116	8	6	SLIPLINED
4	14	44S	368	368-370	255	8	7	SLIPLINED
4	14	44S	370	370-371	264	8	7	SLIPLINED
4	14	44S	371	371-474	222	10	5	SLIPLINED
4	14	44S	372	372-371	165	8	2	SLIPLINED
4	14	44S	373	373-372	395	8	11	CIPP
4	14	44S	375	375-574	101	8	1	CIPP
4	14	44S	377	LH377-375	147	8	4	SLIPLINED
4	14	44S	378	378-375	196	8	7	SLIPLINED
4	14	44S	379	379-378	266	8	14	SLIPLINED
4	14	44S	380	380-379	359	8	22	SLIPLINED
4	14	44S	381	381-380	124	8	1	SLIPLINED
4	14	44S	382	382-381	92	8	1	SLIPLINED
4	14	44S	384	384-383	219	8	3	SLIPLINED
4	14	44S	385	LH385-384	175	8	4	PIPE BURST
4	14	44S	387	387-386	295	8	7	SLIPLINED
4	14	44S	388	388-387	218	8	10	SLIPLINED
4	14	44S	440	440-434	295	8	11	SLIPLINED
4	14	44S	441	441-440	290	8	7	SLIPLINED
4	14	44S	442	442-441	299	8	4	SLIPLINED
4	14	44S	453	453-451	122	8	0	SLIPLINED
4	14	44S	454	LH454-453	108	8	2	SLIPLINED
4	14	44S	455	455-453	169	8	5	SLIPLINED
4	14	44S	456	456-449	200	10	5	SLIPLINED
4	14	44S	464	464-463	297	8	5	SLIPLINED
4	14	44S	465	465-464	266	8	6	SLIPLINED
4	14	44S	470	470-469	226	8	10	SLIPLINED
4	14	44S	471	471-470	246	8	9	SLIPLINED
4	14	44S	472	LH472-471	214	8	10	SLIPLINED
4	14	44S	474	474-323	163	10	0	SLIPLINED
4	14	44S	485	485-560	83	8	0	SLIPLINED
4	14	44S	486	486-485	74	8	2	SLIPLINED
4	14	44S	488	488-556	40	8	0	SLIPLINED
4	14	44S	492	LH492-491	101	8	2	SLIPLINED
4	14	44S	508	508-311	200	8	2	CIPP
4	14	44S	537PA	537PA-537	196	8	1	CIPP
4	14	44S	537PB	537PB-537PA	43	8	1	CIPP
4	14	44S	537PC	537PC-537PA	16	8	0	CIPP
4	14	44S	537PD	537PD-537PC	70	8	0	CIPP
4	14	44S	538	LH538-274	10	8	1	SLIPLINED
4	14	44S	550	550-548	160	24	0	CIPP
4	14	44S	551	551-550	141	24	0	CIPP
4	14	44S	558	558-557	93	24	0	CIPP
4	14	44S	559	559-558	120	24	0	CIPP
4	14	44S	350C	591-592	41	8	2	SLIPLINED
4	14	44S	350B	592-593	99	8	0	SLIPLINED
4	14	44S	601	601-442	134	8	3	SLIPLINED
5	15	44S	203	203-202	216	8	4	SLIPLINED
5	15	44S	204	LH204-203	196	8	4	SLIPLINED
6	33	44S	236	236-235	173	8	6	SLIPLINED
6	33	44S	237	237-236	40	8	1	SLIPLINED
6	33	44S	250	250-249	275	8	5	SLIPLINED
6	33	44S	542	542-541	196	10	0	SLIPLINED
6	33	44S	543	543-541	99	24	0	CIPP
6	33	44S	544	544-543	375	24	0	CIPP
6	33	44S	545	545-544	146	24	0	CIPP

REVISION	BY	DATE
CONFORMING TO		
CONSTRUCTION RECORDS	DBL	3-8-05

TULSA SOUTHSIDE PLANT INFLUENT SANITARY SEWER IMPROVEMENTS PHASE II			
CITY OF TULSA, OKLAHOMA PUBLIC WORKS DEPARTMENT ENGINEERING SERVICES DIVISION			
PLANS AND ESTIMATES PREPARED BY:			Burns & McDonnell
PLAN SCALE:	DRAWN	JRH 12/17/02	APPROVED:
1" =	DESIGNED	JAM 12/17/02	
PROFILE SCALE:	SURVEY		
	FIELD MNGR.	</	